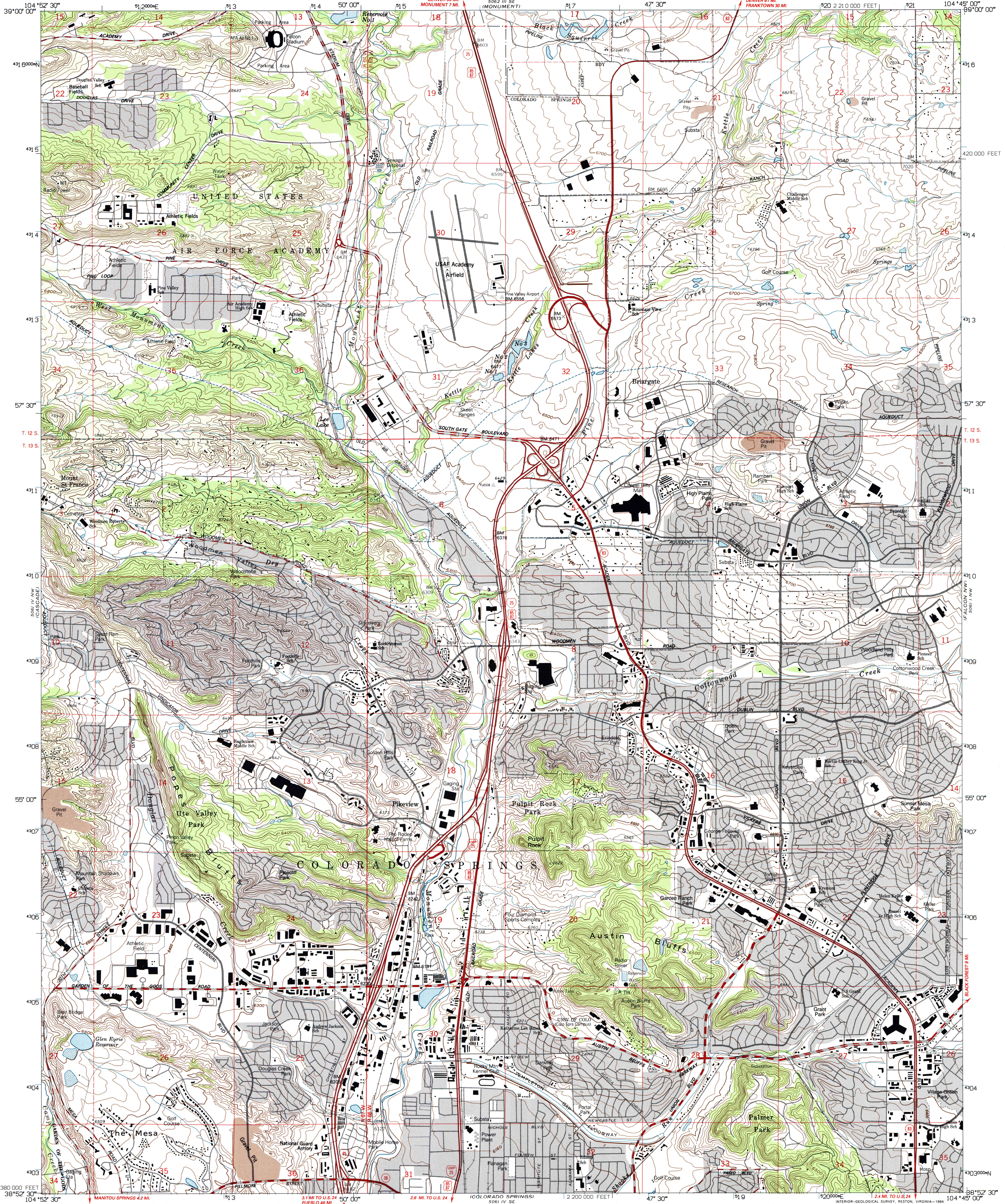


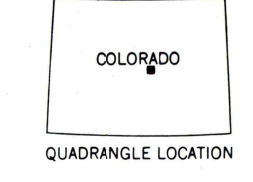
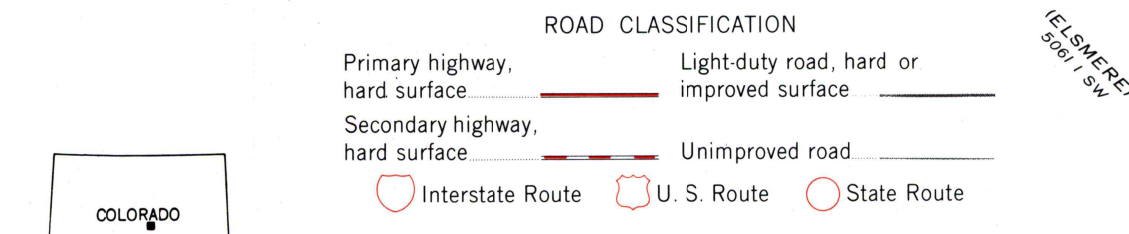
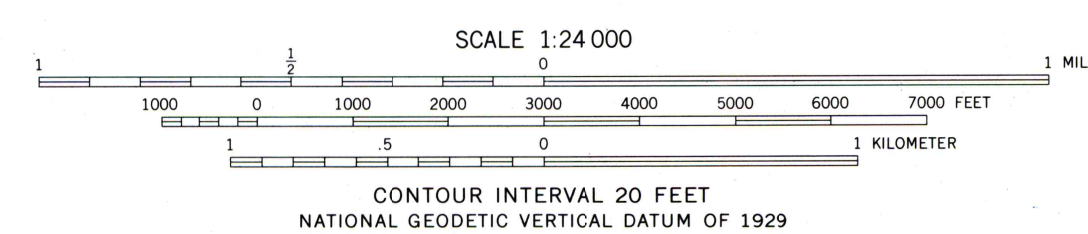
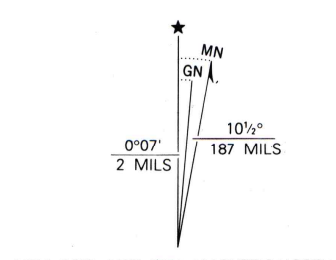


U.S. DEPARTMENT OF THE INTERIOR
U.S. GEOLOGICAL SURVEY

PIKEVIEW QUADRANGLE
COLORADO-EL PASO CO.
7.5 MINUTE SERIES (TOPOGRAPHIC)



Produced by the United States Geological Survey
Control by USGS and NOS/NOAA
Compiled from aerial photographs taken 1947. Revised from aerial photographs taken 1988 and 1991 and other sources. Field checked 1992. Map edited 1994. Contours and land elevations have not been revised and may conflict with other content
North American Datum of 1927 (NAD 27). Projection and blue 1000-meter Universal Transverse Mercator ticks, zone 13 10000-foot ticks: Colorado Coordinate System, central zone
North American Datum of 1983 (NAD 83) is shown by dashed corner ticks. The values of the shift between NAD 27 and NAD 83 for 7.5-minute intersections are obtainable from National Geodetic Survey NADCON software
There may be private inholdings within the boundaries of the National or State reservations shown on this map
Gray tint indicates areas in which only landmark buildings are shown



THIS MAP COMPLIES WITH NATIONAL MAP ACCURACY STANDARDS
FOR SALE BY U.S. GEOLOGICAL SURVEY, P.O. BOX 25286, DENVER, COLORADO 80225
A FOLDER DESCRIBING TOPOGRAPHIC MAPS AND SYMBOLS IS AVAILABLE ON REQUEST

PIKEVIEW, CO
38104-47-TF-024
1988
REVISED 1994
DMA 5061 IV NE-SERIES V877

